

Observations on the hatchlings, eggs and incubation of the Masked Trogon *Trogon personatus* in eastern Ecuador

Harold F. Greeney, Kimberly S. Sheldon and José Simbaña

Received 21 April 2007; final revision accepted 25 August 2007
Cotinga 29 (2008): 82–84

La reproducción del Trogon Enmascarado *Trogon personatus* es poco conocida. Aquí presentamos los primeros datos ecuatorianos sobre la anidación de esta especie. *Trogon personatus* anida adentro de troncos secos y la puesta es de dos huevos blancos. Ambos sexos incuban los huevos por un periodo de 18 días. La cobertura de los huevos es mayor al 90% del día, con el macho incubando la mayoría del día y la hembra pasando la noche en el nido.

Masked Trogon *Trogon personatus* inhabits subtropical evergreen forests at 700–3,600 m, from Venezuela south to central Bolivia³. Despite this relatively broad range, little has been published on its ecology or natural history. The only accounts include a nest 3 m above ground in a rotting trunk which contained two all-white eggs in March, in south-east Colombia^{2,3}, and a fledgling (race *assimilis*) observed in July in north-west Ecuador¹. Nine subspecies of Masked Trogon are recognised³, with both races *personatus* and *temperatus* occurring on the east Andean slope in Ecuador⁴. Here we provide the first detailed account of the breeding biology of race *personatus* in north-east Ecuador.

Study site and methods

All observations were made at Yanayacu Biological Station and Center for Creative Studies (00°35'S 77°53'W; 2,100 m), adjacent to Cabañas San Isidro, prov. Napo, north-east Ecuador. At one nest, found on 13 September 2006 during laying (see below), we placed a HOBO H08–031–08 data logger in the nest, recording both ambient temperature outside the nest and temperature below the eggs inside the nest at two-minute intervals. Subsequently, we estimated periods of nest attendance by comparing these temperature readings. Additionally, we individually marked both eggs and periodically weighed them during incubation. We recorded weight to the nearest 1 mg, calibrating the scale for unevenness using a standard 50 g weight.

Nest sites, nest fate and seasonality

In 2006, we found three active nests, all during the dry season in the Yanayacu region. The first was being excavated on 7 September, at which time an adult female was flushed from an apparently finished cavity. Though the nest was not monitored closely, no eggs or nestlings were observed, and we presume it failed. On 13 September we found a nest containing a single egg, and eventually a complete clutch of two eggs, both of which hatched. The nestlings were later found partially consumed inside the nest, with a large amount of adult female

plumage scattered about the nesting area. Finally, we found a nest on 30 November containing two eggs, one of which was already pipped. Two days later it held two nestlings, which died of unknown causes. All nests were excavated in the soft, rotting wood of vertical decaying tree trunks. Mean (\pm SD) height above the ground of the three nests was 3.7 ± 0.7 m. All were located well within primary forest, in areas with little *Chusquea* bamboo.

Eggs

The four eggs (Fig. 1) we observed in two different nests were immaculate white, with a very pale bluish tinge. Eggs from the first clutch measured 29.2×22.8 and 27.4×22.7 mm. Fresh weight of the first egg, measured before the second was laid, was 8.510 g. The second egg weighed 7.8 g approximately 2–3 days after it was laid. Over a 13-day period during the middle of incubation, eggs in this clutch lost 1.2% and 1.1% of their mass per day, respectively. Eggs from the second clutch measured 27.7×23.4 and 28.4×23.6 mm. One to two days prior to hatching the eggs in this clutch weighed 7.2 and 7.4 g, suggesting that Schönwetter's⁵ estimation of 7.1 g for this species' eggs may have been slightly low.

Incubation

By using a data logger to record incubation, we were unable to record the proportion of incubation duties for which each sex was responsible. Furthermore, when adults change places rapidly at the nest, coverage of the eggs appears continuous using this method. During seven visits made to the nest between 10h15 and 16h15 during incubation, we always found the male attending the eggs; the single occasion that we visited the nest at 17h00, we flushed the female. These data suggest that Masked Trogon partitions the incubation duties like other species, as described by Skutch^{6–10}, the female spending time on the nest in the morning, evening and through the night. We occasionally recorded a break in coverage between 08h00 and 09h30, suggesting the adults switched during this period. Patterns of incubation recorded on the

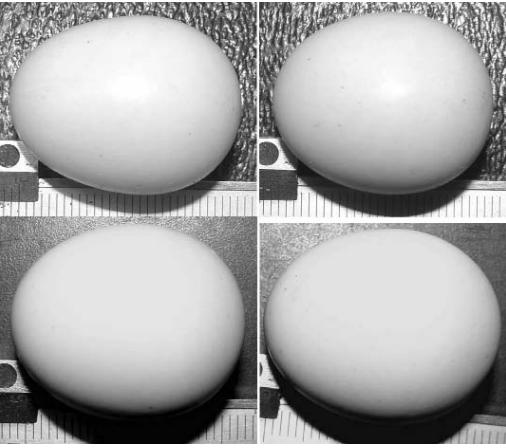


Figure 1. Eggs of Masked Trogon *Trogon personatus*, Yanayacu Biological Station, Napo, Ecuador; each row represents a complete clutch from two different nests (Harold F. Greeney)

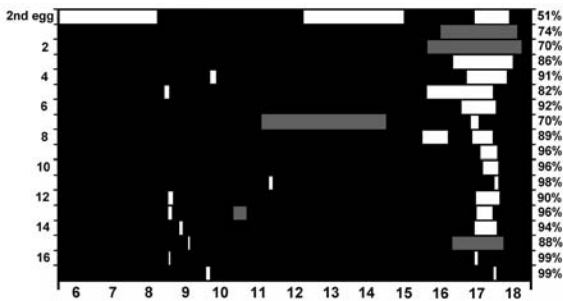


Figure 2. Incubation rhythms of Masked Trogon *Trogon personatus* at Yanayacu Biological Station, Napo, Ecuador. Black areas represent periods where an adult was present at the nest, and white areas periods of absence. Off-bouts where the adult was flushed by an observer in grey. Attendance is shown from 05h30 to 18h30 each day, with percentage coverage (daylight hours = 06h00–18h00) to the right and the day of incubation since clutch completion on the left.



Figure 3. Nestling Masked Trogon *Trogon personatus* on day of hatching, Yanayacu Biological Station, Napo, Ecuador (Harold F. Greeney)

temperature data logger are shown in Fig. 2, and are generally similar to those described for other trogons. Incubation at one nest, from laying of the first egg until the hatching of the first nestling, was 18 days.

Nestlings

The eggs at the first nest hatched one day apart and those at the second on the same day. Nestlings at the second nest were discovered, with egg shells still in the nest, at 10h45 on 2 December. At this time they weighed 5.8 and 6.2 g. The nestlings were pink-skinned and naked (Fig. 3), with subcutaneous, prominently developing feather tracts in the capital, dorsal, sternal, and cural areas. Their bills were flesh-coloured, darkening to black subapically. Mandible tips were pale grey, with prominent white egg teeth.

Adult behaviour at the nest

Though we did not record adult behaviour at the nest in the detail of Skutch's many accounts^{6–10}, we did note that, when flushed, the male Masked Trogon would remain silently in the vicinity, sometimes perching just 4–5 m distant. Unlike Skutch's description of the vocal behaviour of Baird's Trogon *T. bairdii*⁹, however, the Masked Trogon was always silent. Also, whilst Skutch⁹ observed that Baird's Trogon never threatened him nor made broken-wing displays during his presence at the nest, we noted a distinctive departure from the nest by the male Masked Trogon. On five of seven times the male flushed from the nest, the bird dropped from the opening downwards in the direction of the observer, spreading and fluttering the wings and tail, whereupon, often after approaching to within 1 m of the observer, the male flew silently to a nearby perch. We are unsure, however, whether to interpret this as a threat or distraction. The male always remained on the nest until we were within 1–3 m ($n=5$, mean flush distance = 2.1 ± 0.7 m).

Acknowledgements

We thank Carmen Bustamante and Mitch Lysinger for granting us continued access to San Isidro Reserve and for their patience and support. The study was part-funded by contributions from Field Guides Inc., Tim Metz, Jay Peltz and the Hertzberg Family Foundation. Additionally, the generosity of Matt Kaplan and John V. & the late Ruth Ann Moore, through donations to the Population Biology Foundation, were instrumental in funding this work. We also thank Ian Davidson, Tom Walla and the staff of Yanayacu for their continued support. This is publication no. 111 of the Yanayacu Natural History Research Group and was inspired by the PBNHS.

References

- Greeney, H. F. & Nunnery, T. (2006) Notes on the breeding of north-west Ecuadorian birds. *Bull. Brit. Orn. Club* 126: 38–45.
- Hilty, S. L. & Brown, W. L. (1986) *A guide to the birds of Colombia*. Princeton, NJ: Princeton University Press.
- Johnsgard, P. A. (2000) *Trogons and quetzals of the world*. Washington DC: Smithsonian Institution Press.
- Ridgely, R. S. & Greenfield, P. J. (2001) *The birds of Ecuador*, 1. Ithaca, NY: Cornell University Press.
- Schönwetter, M. (1966) *Handbuch der Oologie*, 1. Berlin: Akademik-Verlag.
- Skutch, A. F. (1948) Life history of the Citreoline Trogon. *Condor* 50: 137–147.
- Skutch, A. F. (1956) Life history of the Collared Trogon. *Auk* 73: 354–366.
- Skutch, A. F. (1959) Life history of the Black-throated Trogon. *Wilson Bull.* 71: 5–18.
- Skutch, A. F. (1962) Life history of the White-tailed Trogon. *Ibis* 104: 301–313.
- Skutch, A. F. (1972) *Studies of tropical American birds*. Cambridge, MA: Publ. Nuttall Orn. Club 10.

Harold F. Greeney, Kimberly S. Sheldon and José Simbaña

Yanayacu Biological Station and Center for Creative Studies, Cosanga, Ecuador; c/o 721 Foch y Amazonas, Quito, Ecuador. HFG and KSS also at: Dept. of Biology, University of Washington, Box 351800, 24 Kincaid Hall, Seattle, Washington 98195–1800, USA.

Ecuador Photo Special

High Andes

Figure 1. Jcotococo Antpitta *Grallaria ridgelyi*, Tapichalaca Reserve, Zamora-Chinchipec province (Murray Cooper)

Figure 2. Black-faced Ibis *Theristicus melanopis*, Antisana Ecological Reserve, Napo province (Murray Cooper)

Figure 3. Black-crested Tit-Tyrant *Anairetes nigrocristatus*, Utuana Reserve, Loja province (Murray Cooper)

Figure 4. Ocellated Tapaculo *Acropternis orthonyx*, Guacamayos Ridge, Napo province (Murray Cooper)

Figure 5. Andean Condor *Vultur gryphus*, Cayambe, Pichincha province (Murray Cooper)

Figure 6. Pale-headed Brush Finch *Atlapetes pallidiceps*, Yunguilla Reserve, Azuay province (Murray Cooper)

Andean slopes

Figure 7. Flame-faced Tanager *Tangara parzudakii*, Yanayacu Biological Station, Napo province (Murray Cooper)

Figure 8. White-tipped Sicklebill *Eutoxeres aquila*, Yanayacu Biological Station, Napo province (Murray Cooper)

Figure 9. Golden-plumed Parakeet *Leptosittaca branickii*, Tapichalaca Reserve, Zamora-Chinchipec province (Murray Cooper)

Figure 10. Fiery-throated Fruiteater *Pipreola chlorolepidota*, Cordillera Napo Galeras, Napo province (Murray Cooper)

Figure 11. Coppery-chested Jacamar *Galbula pastazae*, Cordillera Napo Galeras, Napo province (Murray Cooper)

Figure 12. White-capped Dipper *Cinclus leucocephalus*, Mindo, Pichincha province (Murray Cooper)

Figure 13. Chestnut-breasted Coronet *Boissonneaua mathewsii*, Tapichalaca Reserve, Zamora-Chinchipec province (Murray Cooper)

Figure 14. Chestnut-crowned Antpitta *Grallaria ruficapilla*, San Isidro Reserve, Napo province (Murray Cooper)

Amazonia

Figure 15. White-browed Purpletuft *Iodopleura isabellae*, Tiputini Biodiversity Station, Orellana province (Murray Cooper)

Figure 16. Lunulated Antbird *Gymnophithys lunulata*, Tiputini Biodiversity Station, Orellana province (Murray Cooper)

Figure 17. Salvin's Curassow *Mitu salvini*, Tiputini Biodiversity Station, Orellana province (Murray Cooper)

Figure 18. Long-billed Woodcreeper *Nasica longirostris*, Napo Wildlife Centre, Orellana province (Murray Cooper)

Figure 19. American Pygmy Kingfisher *Chloroceryle aenea*, Napo Wildlife Centre, Orellana province (Murray Cooper)

Figure 20. Rufous Potoo *Nyctibius bracteatus*, Tiputini Biodiversity Station, Orellana province (Murray Cooper)

Chocó

Figure 21. Green Thorntail *Popelairia conversii*, San Miguel de los Bancos, Pichincha province (Murray Cooper)

Figure 22. Sunbittern *Eurypyga helias*, Mindo, Pichincha province (Murray Cooper)

Figure 23. Toucan Barbet *Semnorhis ramphastinus*, Los Cedros Reserve, Imbabura province (Murray Cooper)

Figure 24. Scarlet-breasted Dacnis *Dacnis berlepschi*, Pedro Vicente Maldonado, Pichincha province (Murray Cooper)

Figure 25. Club-winged Manakin *Machaeropterus deliciosus*, Los Cedros Reserve, Imbabura province (Murray Cooper)

Figure 26. Pale-mandibled Aracari *Pteroglossus erythrogygius*, Nanegalito, Pichincha province (Murray Cooper)

Tumbes

Figure 27. Pacific Royal Flycatcher *Onychorhynchus occidentalis*, Bosque Protector Cerro Blanco, Guayas province (Murray Cooper)

Figure 28. Collared Plover *Charadrius collaris*, Manglares Churute Ecological Reserve, Guayas province (Murray Cooper)

Figure 29. Chestnut-collared Swallows *Petrochelidon rufocollaris*, Macará, Loja province (Murray Cooper)

Figure 30. West Peruvian Screech Owl *Otus roboratus*, Jorupe Reserve, Loja province (Murray Cooper)

Figure 31. Pacific Parrotlet *Forpus coelestis*, Bosque Protector Cerro Blanco, Guayas province (Murray Cooper)

Figure 32. Horned Screamer *Anhima cornuta*, Manglares Churute Ecological Reserve, Guayas province (Murray Cooper)